

5.15 Wiltshire County

Habitat	Habitat area within County (ha)	Habitat area within ESA (ha)	% of county habitat resource within ESA	Habitat area within CSS (ha)	% of county habitat resource within CSS	Habitat area within WES (ha)	% of county resource within WES	Habitat area within AES (ha)	% of county habitat resource within AES	Habitat area within SSSI (ha)	% of county habitat resource within SSSI
Coastal and Floodplain Grazing Marsh	130	4	3%	60	46%	13	10%	101	78%	14	11%
Fen	10	0	0%	1	10%	4	40%	7	70%	10	100%
Woodland	-	86	-	493	-	502	-	1,046	-	889	-
Lowland Meadow	316	117	37%	154	49%	16	5%	224	71%	40	13%
Lowland Calcareous Grassland	14,414	923	6%	1,308	9%	576	4%	2,041	14%	11,821	82%
Purple Moor Grass and Rush Pasture	19	0	0%	7	37%	1	5%	8	42%	9	47%
Heathland within Lowland Areas	43	0	0%	0	0%	6	14%	6	14%	10	23%

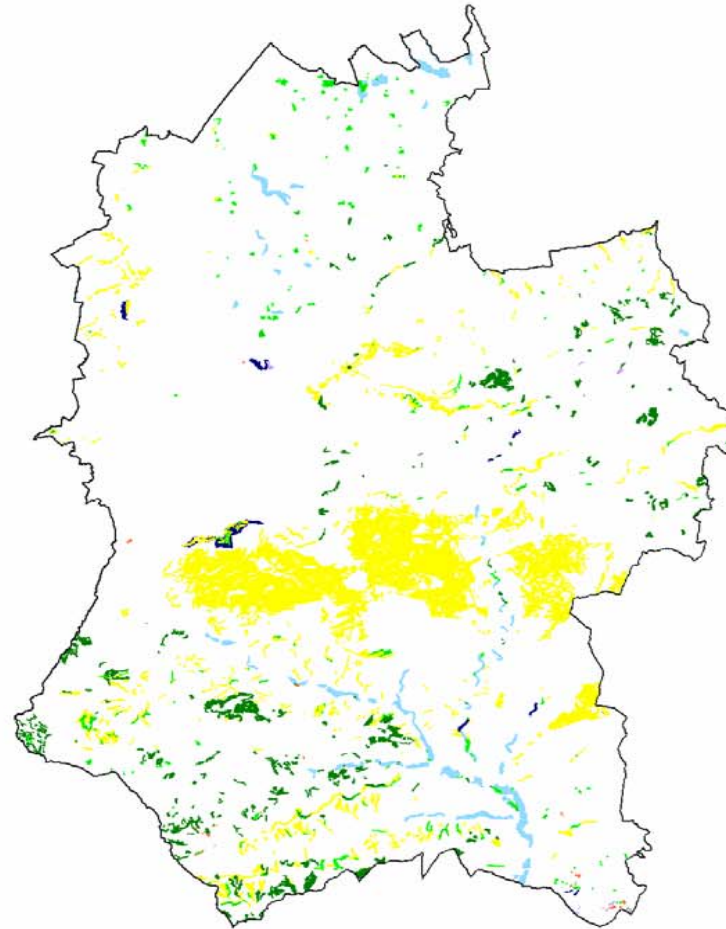
Excluding Woodland

- There is a minimum of 14,932ha of UKBAP Priority Habitat in Wiltshire
- A minimum of 2,387ha (16%) of UKBAP Priority Habitat in Wiltshire is currently found on land with associated AES agreements
- A minimum of 11,904ha (80%) of UKBAP Priority Habitat in Wiltshire is currently found within the boundaries of SSSIs

July 2006

Map showing distribution of UK BAP Priority Habitat within Wiltshire County

- Heathland within Lowland Areas
- Heathland within Upland Areas
- Seagrass Beds
- Sabellaria Reef
- Saline Lagoon
- Purple Moor Grass and Rush Pasture
- Semi-natural Broadleaf Woodland
- Mudflat
- Maritime Cliff and Slope
- Lowland Meadow
- Lowland Acid Grassland
- Lowland Calcareous Grassland
- Fen
- Coastal Salt Marsh
- Coastal Floodplain Grazing Marsh
- Coastal Vegetated Shingle
- Reedbed
- Maerl Bed
- Coastal Sand Dune



Please Note this represents only the minimum known extent of certain UK BAP Priority Habitats and is not comprehensive

This map is reproduced from the Ordnance Survey material with the permission of Ordnance Survey on behalf of the Controller of Her Majesty's Stationery Office. Crown Copyright. Unauthorised reproduction infringes Crown copyright and may lead to prosecution or civil proceedings. South Gloucestershire Council Licence No 100023410, 2006.

South West Regional Biodiversity Partnership - South West Local Records Centres - National Biodiversity Network



