

5.8 North Somerset Unitary Authority

Habitat	Habitat area within County (ha)	Habitat area within ESA (ha)	% of county habitat resource within ESA	Habitat area within CSS (ha)	% of county habitat resource within CSS	Habitat area within WES (ha)	% of county resource within WES	Habitat area within AES (ha)	% of county habitat resource within AES	Habitat area within SSSI (ha)	% of county habitat resource within SSSI
Coastal Sand Dune	14	0	0%	0	0%	0	0%	0	0%	9	64%
Coastal Vegetated Shingle	8	0	0%	<1	<13%	0	0%	<1	<13	6	75%
Coastal Saltmarsh and Mudflat	1,300	0	0%	13	1%	0	0%	13	1%	1,300	100%
Coastal and Floodplain Grazing Marsh	112	0	0%	45	40%	9	8%	54	48%	6	5%
Maritime Cliff and Slope	138	0	0%	48	35%	0	0%	48	35%	97	70%
Fen	1	0	0%	1	100%	0	0%	1	100%	1	100%
Woodland	-	2	-	142	-	114	-	224	-	394	-
Lowland Meadow	16	0	0%	3	19%	2	13%	4	25%	3	19%
Lowland Calcareous Grassland	176	26	19%	112	64%	32	18%	112	64%	114	65%
Purple Moor Grass and Rush Pasture	35	0	0%	35	100%	0	-	35	100%	35	100%
Heathland within Lowland Areas	26	0	0%	17	65%	17	65%	17	65%	23	88%

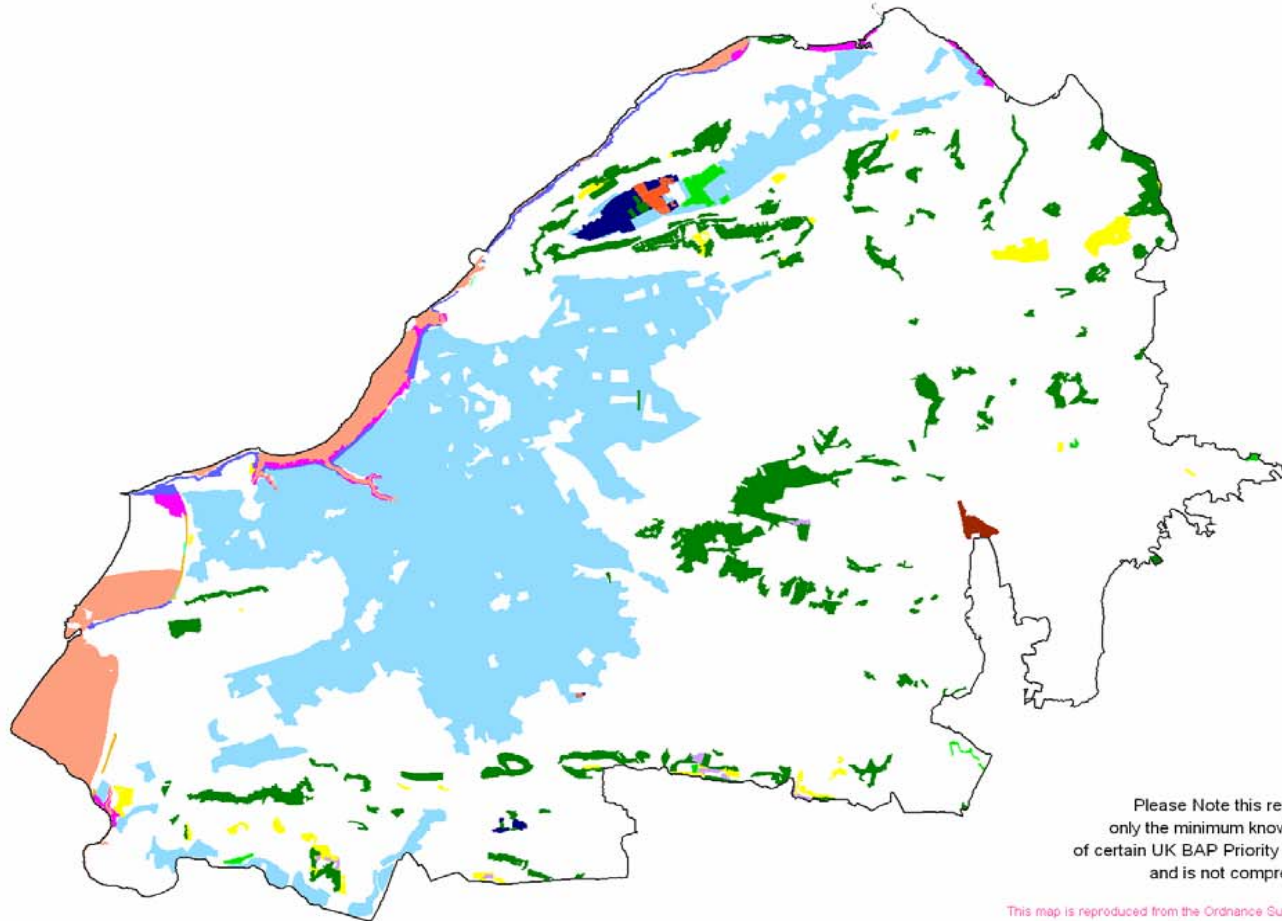
Excluding Woodland

- There is a minimum of 1,826ha of UKBAP Priority Habitat in North Somerset
- A minimum of 284ha (16%) of UKBAP Priority Habitat in North Somerset is currently found on land with associated AES agreements
- A minimum of 1,594ha (87%) of UKBAP Priority Habitat in North Somerset is currently found within the boundaries of SSSIs

July 2006

Map showing distribution of UK BAP Priority Habitat within North Somerset Local Authority

- Heathland within Lowland Areas
- Heathland within Upland Areas
- Seagrass Beds
- Sabellaria Reef
- Saline Lagoon
- Purple Moor Grass and Rush Pasture
- Semi-natural Broadleaf Woodland
- Mudflat
- Maritime Cliff and Slope
- Lowland Meadow
- Lowland Acid Grassland
- Lowland Calcareous Grassland
- Fen
- Coastal Salt Marsh
- Coastal Floodplain Grazing Marsh
- Coastal Vegetated Shingle
- Reedbed
- Maerl Bed
- Coastal Sand Dune



Please Note this represents only the minimum known extent of certain UK BAP Priority Habitats and is not comprehensive

This map is reproduced from the Ordnance Survey material with the permission of Ordnance Survey on behalf of the Controller of Her Majesty's Stationery Office. Crown Copyright. Unauthorised reproduction infringes Crown copyright and may lead to prosecution or civil proceedings. South Gloucestershire Council Licence No 100023410, 2006.

South West Regional Biodiversity Partnership - South West Local Records Centres - National Biodiversity Network



