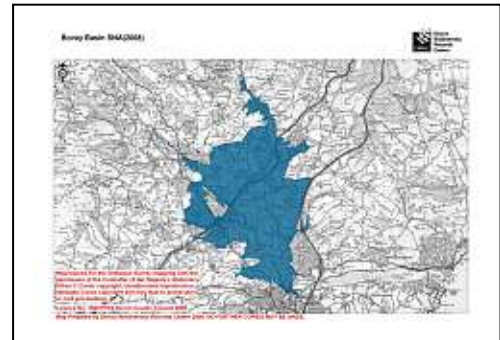


## 1. SNA details

<b>SNA name:</b>	Bovey Basin
<b>SNA unique number:</b>	372
<b>SNA area (ha):</b>	3,027.71



## 2. Summary of nature conservation interest

### Priority BAP habitats:

<b>Main Regional Nature Map habitat:</b>	Coastal and Floodplain Grazing Marsh
<b>Other Regional Nature Map habitat(s):</b>	Woodland Lowland Heath
<b>Other UK BAP habitats:</b>	Lowland mixed deciduous woodland Lowland Meadow Wet woodland Reedbeds Ponds, mesotrophic lakes Rivers Hedgerows

An area of very diverse wildlife with a mosaic of habitats including coastal and floodplain grazing marsh, significant areas of lowland heathland, standing and running water, woodland and neutral grassland. A number of important species are associated with these habitats, including:

<b>Important species or species assemblage</b>	<b>Status</b>
Populations of dragonflies & damselflies (26 species at Stover Country park)	Nationally Important
Great crested newts	UKBAP
Populations of Invertebrates associated with heathland and wet grassland.	UKBAP, DBAP
Greater Horseshoe bats	UKBAP, DBAP
Narrow headed ant (only English location at Bovey Heathfield)	UKBAP
Green winged orchid (largest colony in county at Brocks Farm)	Devon Notable Species
Otters	UKBAP, DBAP
Dormice	UKBAP, DBAP

See Appendix 1 for a list of further species recorded in this SNA.

The SNA is also of geological interest and is a key area of the quarrying of ball clay which has resulted in several interesting exposures.

## Nature conservation designations

Please refer to a site's formal citation for a complete consideration of the reasons for its designation.

Designation	Site Name	Description
SSSI, SAC	South Hams	Coastal site with maritime and calcareous grassland, scrub and cliff communities; woods and caves with palaeontological interest and bats; mines with important bat roosts.
SSSI	Stover Country Park	Freshwater lake, reedbed, remnant heath, broadleaved & conifer plantation. Rich invertebrate fauna, particularly dragonflies
SSSI	Bovey Heathfield	Dry heath, wet heath, alder carr and scrub
SSSI	Brock's Farm	Unimproved neutral grassland
SSSI	Chudleigh Caves and Woods	Ancient semi-natural woodland & broadleaved plantation on limestone. Lichen interest and palaeontological interest.
gSSSI	Crockham Quarry	Lower carboniferous greenstone
SSSI	Chudleigh Knighton Heath	Wet and dry heath, lowland bog, ponds and scrub
gSSSI	Southacre Clay Pits	Exposures of lignite and clay sediments belonging to the Middle & Upper Bovey Formation

In addition the SNA includes 22 County Wildlife Sites covering habitats including: Neutral grassland, acid grassland, wet grassland, heathland, broadleaved woodland, reedbed and ponds.

### 3. UK BAP Priority habitat maintenance and restoration targets for Bovey Basin SNA 372

(the measurement unit is hectare unless stated otherwise and rounded up/down)

**Maintenance targets** (current extent of habitat) – 100 % favourable condition

UK BAP priority habitat	Coastal & floodplain grazing marsh	Lowland mixed deciduous woodland	Wet Woodland	Lowland beech & yew woodland	Woodland TOTAL	Lowland Meadow	Lowland Heathland	Lowland Calcareous Grassland	TOTAL
Minimum area *			3			4			7
Maximum area #	235	200	5	10	214	21	60	9	754

\* current extent of habitat = a + b

a) sum of all the areas of criterion 1 polygons

b) number of criterion 2 polygons multiplied by the minimum mappable unit for that habitat

*[criterion 3 polygons not included]*

*# current extent of habitat = criterion 1 + criterion 2 + criterion 3*

### **Theoretical restoration/creation targets using Rebuilding Biodiversity (RB) methodology:**

The Rebuilding Biodiversity in the South West Technical Manual, November 2005 suggests the following targets for a Strategic Nature Area profile where the priority habitat is coastal and floodplain grazing marsh:

60% cover of priority habitat  
0% cover of other semi-natural habitat  
40% cover of other land uses.

*This SNA will be further developed as follows:*

## **4. Opportunities for habitat restoration and creation in the SNA**

This is an optional but desirable section to be completed by local experts and which would outline the practical opportunities for habitat restoration and creation on the ground. This may include emphasising the importance of an SNA for habitats additional to the primary one for which it was identified or, indeed, for particular species.

This section can also be used to develop more realistic habitat restoration targets, which could then be used to refine the theoretical targets listed above.

## **5. Constraints to habitat restoration and creation in the SNA**

As above, but in this case outlining the constraints to habitat restoration and creation in the SNA.

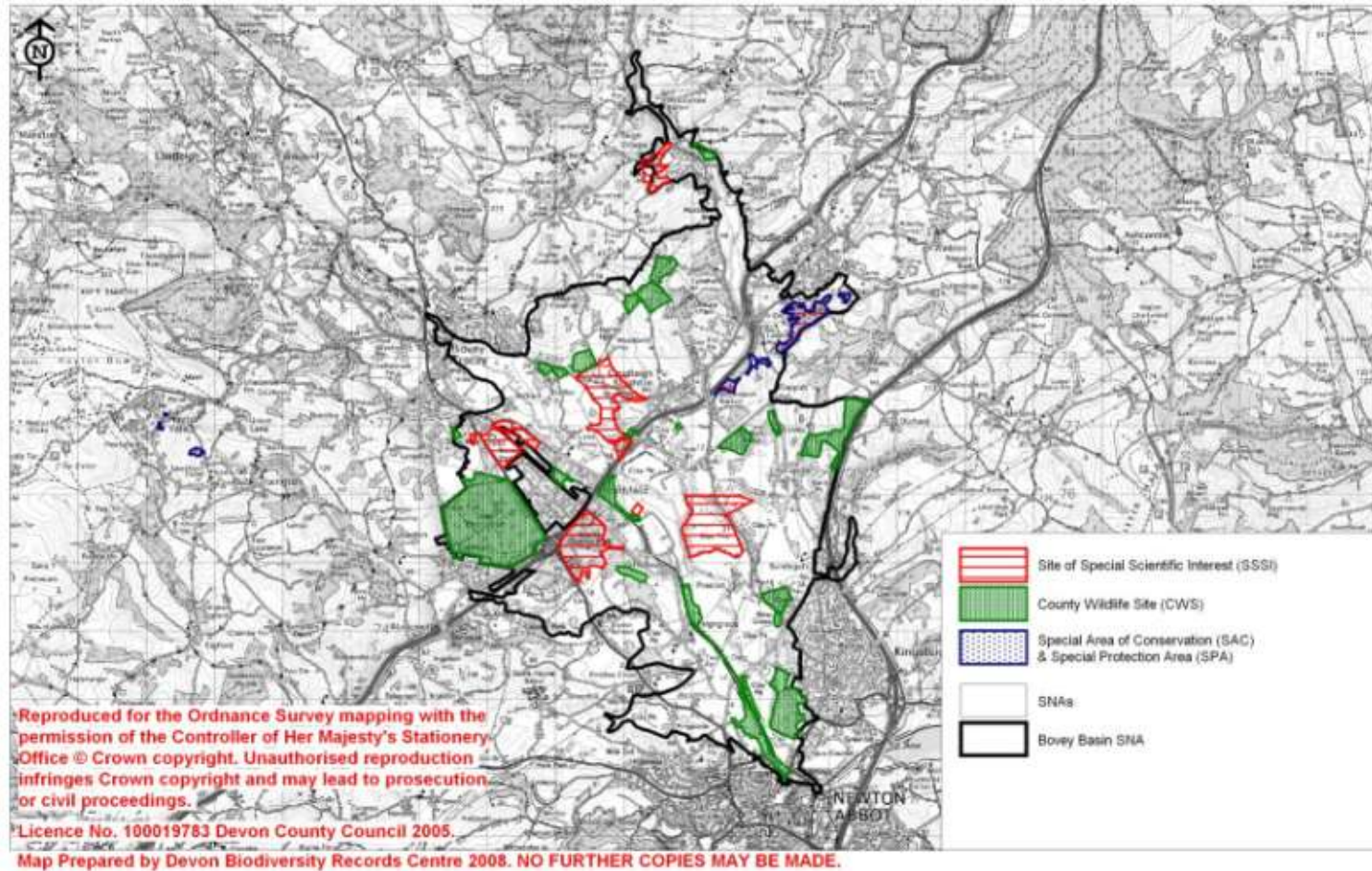
## **6. Other information**

This is another optional section reliant upon local knowledge of the SNA. This section can be used for any other information that might be useful. It may be particularly useful for those SNAs within which there current projects or for which projects are planned.

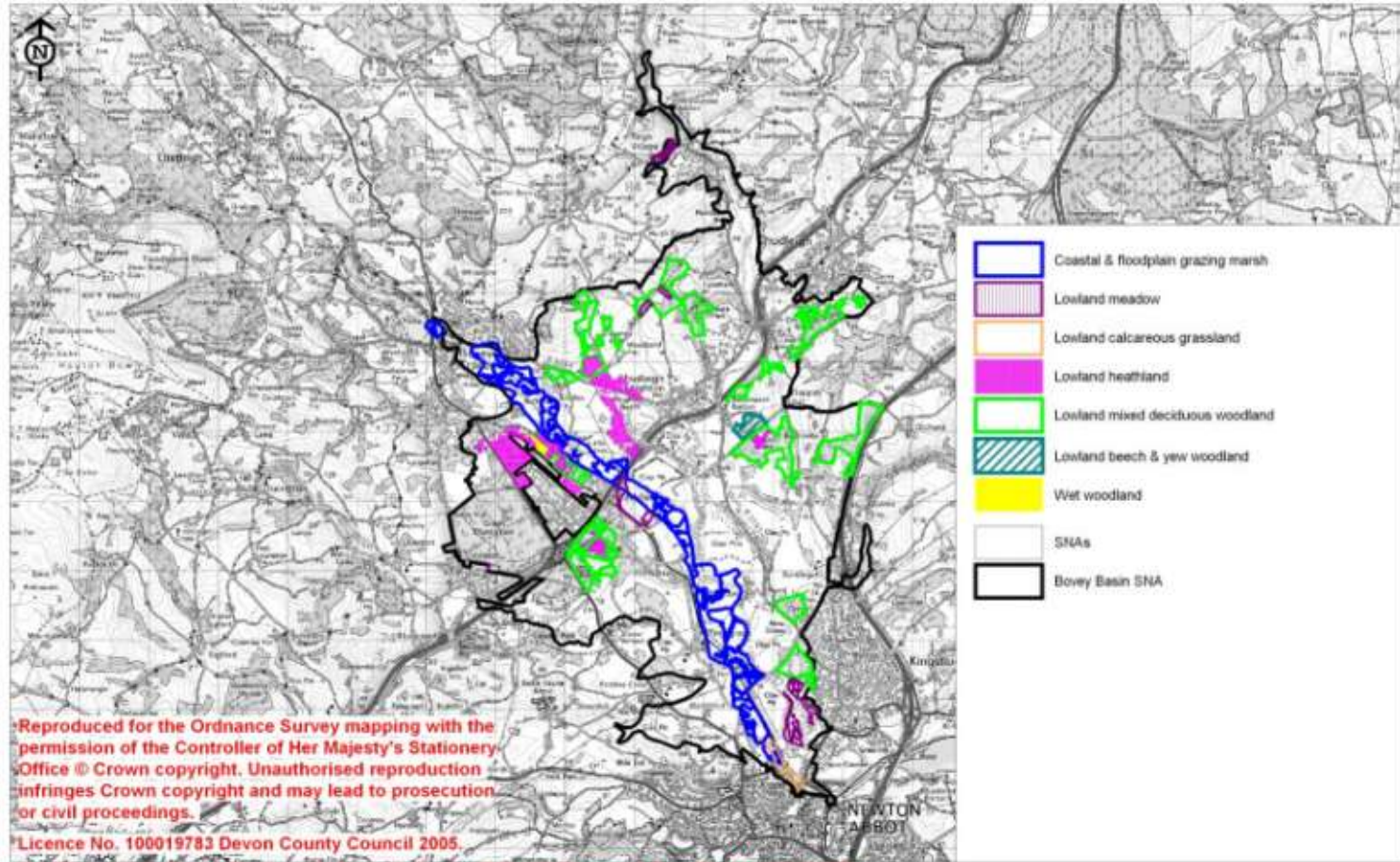
Contents could include:

- Restoration targets for BAP habitats additional to the main nature map habitat.
- Maps detailing areas for restoration
- Nature conservation objectives
- And so on.

## Designated sites within the Bovey Basin SNA (2008)



Selected UK BAP priority habitats within the Bovey Basin SNA(2008)



**Appendix 1: Legally protected & notable species records within Bovey Basin SNA (2009)**

<b>Common name</b>	<b>Scientific name</b>	<b>Status</b>
45 Khz Pipistrelle	<i>Pipistrellus pipistrellus</i> 45kHz	WCA
A beetle	<i>Tachys parvulus</i>	Nb
A fly	<i>Hercostomus angustifrons</i>	Nb
A long-eared bat	<i>Plecotus</i>	WCA
Adder	<i>Vipera berus</i>	S.41
Alder Kitten	<i>Furcula bicuspis</i>	Nb
Alternate Water-Milfoil	<i>Myriophyllum alterniflorum</i>	DN2
Anomalous	<i>Stilbia anomala</i>	S.41
Argent And Sable	<i>Rheumaptera hastata hastata</i>	S.41; Nb
August Thorn	<i>Ennomos quercinaria</i>	S.41
Badger	<i>Meles meles</i>	WCA
Bastard Balm	<i>Melittis melissophyllum</i>	S.41; NS; DN2
Bee Orchid	<i>Ophrys apifera</i>	DN1
Bird's-Nest Orchid	<i>Neottia nidus-avis</i>	DN1
Black-Headed Gull	<i>Larus ridibundus</i>	Amber
Bloody Crane's-Bill	<i>Geranium sanguineum</i>	DN1
Blue Fleabane	<i>Erigeron acer</i>	DN2
Blunt-Flowered Rush	<i>Juncus subnodulosus</i>	DN2
Bog Bush Cricket	<i>Metrioptera brachyptera</i>	Nb
Brindled Beauty	<i>Lycia hirtaria</i>	S.41
Broad-Bordered Bee Hawk	<i>Hemaris fuciformis</i>	Nb
Brown Argus	<i>Aricia agestis</i>	Decline
Brown Hairstreak	<i>Thecla betulae</i>	S.41; Nb
Brown Hare	<i>Lepus europaeus</i>	S.41; DBAP
Brown Long-Eared Bat	<i>Plecotus auritus</i>	S.41
Buff Ermine	<i>Spilosoma luteum</i>	S.41
Bullfinch	<i>Pyrrhula pyrrhula</i>	S.41; Red
Cinnabar	<i>Tyria jacobaeae</i>	S.41
Cloaked Carpet	<i>Euphyia biangulata</i>	Nb
Common Dormouse	<i>Muscardinus avellanarius</i>	S.41; DBAP
Common Frog	<i>Rana temporaria</i>	WCA
Common Gromwell	<i>Lithospermum officinale</i>	DN2
Common Gull	<i>Larus canus</i>	Amber
Common Rock-Rose	<i>Helianthemum nummularium</i>	DN1
Common Shrew	<i>Sorex araneus</i>	WCA
Common Toad	<i>Bufo bufo</i>	S.41
Corky-Fruited Water-Dropwort	<i>Oenanthe pimpinelloides</i>	DN3
Cowslip	<i>Primula veris</i>	DN3
Crossbill	<i>Loxia curvirostra</i>	WCA
Cuckoo	<i>Cuculus canorus</i>	S.41; Amber
Cyclamen	<i>Cyclamen hederifolium</i>	DN1; RDB2
Cyperus Sedge	<i>Carex pseudocyperus</i>	DN1
Dark Green Fritillary	<i>Argynnis aglaja</i>	Decline
Dark-Barred Twin-Spot Carpet	<i>Xanthorhoe ferrugata</i>	S.41
Dartford Warbler	<i>Sylvia undata</i>	Amber
Daubenton's Bat	<i>Myotis daubentoni</i>	WCA
Deptford Pink	<i>Dianthus armeria</i>	S.41; DN1; DR; vul
Devonshire Wainscot	<i>Mythimna putrescens</i>	Na

Common name	Scientific name	Status
Dingy Skipper	<i>Erynnis tages</i>	S.41; Decline
Dot Moth	<i>Melanchra persicariae</i>	S.41
Dotted Chestnut	<i>Conistra rubiginea</i>	Nb
Dotted-Border Wave	<i>Idea sylvestraria</i>	Nb
Downy Emerald	<i>Cordulia aenea</i>	Nb; KeyD (N)
Dropwort	<i>Filipendula vulgaris</i>	DN1
Dunnock	<i>Prunella modularis</i>	Amber
Dusky Brocade	<i>Apamea remissa</i>	S.41
English Scurvygrass	<i>Cochlearia anglica</i>	DN2
Essex Skipper	<i>Thymelicus lineola</i>	Decline
Esthwaite Water-Weed	<i>Elodea nuttallii</i>	DN1
Fen Pondweed	<i>Potamogeton coloratus</i>	NS; DN1; DR
Field Garlic	<i>Allium oleraceum</i>	DN1; DR
Field Gentian	<i>Gentianella campestris</i>	DN1; DR
Fieldfare	<i>Turdus pilaris</i>	Amber
Floating Spike-Rush	<i>Eleogiton fluitans</i>	DN2
Fragrant Orchid	<i>Gymnadenia conopsea</i>	DN1
Fringed Water-Lily	<i>Nymphoides peltata</i>	NS; DN1; DR
Frogbit	<i>Hydrocharis morsus-ranae</i>	DN1; DR; Nb
Galium Carpet	<i>Epirrhoe galiata</i>	S.41
Garden Everlasting Pea	<i>Lathyrus latifolius</i>	DN2
Garden Tiger	<i>Arctia caja</i>	S.41
Ghost Moth	<i>Hepialus humuli</i>	S.41
Goldcrest	<i>Regulus regulus</i>	Amber
Grape-Hyacinth	<i>Muscari neglectum</i>	S.41
Grass Snake	<i>Natrix natrix</i>	S.41
Grass Vetchling	<i>Lathyrus nissolia</i>	DN1
Grass Wave	<i>Perconia strigillaria</i>	Nb
Grayling	<i>Hipparchia semele</i>	S.41
Great Crested Newt	<i>Triturus cristatus</i>	S.41
Great Green Bush Cricket	<i>Tettigonia viridissima</i>	DBAP
Great Pond-Sedge	<i>Carex riparia</i>	DN2
Great Water Grass	<i>Glyceria maxima</i>	DN2
Greater Horseshoe Bat	<i>Rhinolophus ferrumequinum</i>	S.41; DBAP
Green Hairstreak	<i>Callophrys rubi</i>	Decline
Green Woodpecker	<i>Picus viridis</i>	Amber
Green-Winged Orchid	<i>Orchis morio</i>	DN1
Grey Dagger	<i>Acronicta psi</i>	S.41
Grey Wagtail	<i>Motacilla cinerea</i>	Amber
Grizzled Skipper	<i>Pyrgus malvae</i>	S.41; Decline
Ground beetle	<i>Anisodactylus nemorivagus</i>	S.41
Hairy Dragonfly	<i>Brachytron pratense</i>	Nb; KeyD (N)
Harvest Mouse	<i>Micromys minutus</i>	S.41
Heath Fritillary	<i>Mellicta athalia</i>	S.41; RDB2
Heath Lobelia	<i>Lobelia urens</i>	DN1; DR; vul
Heath Pearlwort	<i>Sagina subulata</i>	DN3
Hedgehog	<i>Erinaceus europaeus</i>	S.41
High Brown Fritillary	<i>Argynnis adippe</i>	S.41; RDB2
Hoary Plantain	<i>Plantago media</i>	DN2
Hobby	<i>Falco subbuteo</i>	WCA
Horse Chestnut	<i>Pachynemias hippocastanaria</i>	Nb

Common name	Scientific name	Status
House Martin	<i>Delichon urbica</i>	Amber
House Sparrow	<i>Passer domesticus</i>	S.41; Red
Ivy Broomrape	<i>Orobanche hederæ</i>	NS; DN2
Jersey Tiger	<i>Euplagia quadripunctaria</i>	Nb
Keeled Skimmer	<i>Orthetrum coerulescens</i>	KeyD (N)
Kestrel	<i>Falco tinnunculus</i>	Amber
Kingfisher	<i>Alcedo atthis</i>	Amber
Knotgrass	<i>Acronicta rumicis</i>	S.41
Knotted Pearlwort	<i>Sagina nodosa</i>	DN3
Lackey	<i>Malacosoma neustria</i>	S.41
Large Red-Belted Clearwing	<i>Synanthedon culiciformis</i>	Nb
Lead-Coloured Pug	<i>Eupithecia plumbeolata</i>	Nb
Lesser Black-Backed Gull	<i>Larus fuscus</i>	Amber
Lesser Bulrush	<i>Typha angustifolia</i>	DN1
Lesser Centaury	<i>Centaureum pulchellum</i>	DN1
Lesser Evening Primrose	<i>Oenothera biennis</i>	DN1
Lesser Horseshoe Bat	<i>Rhinolophus hipposideros</i>	S.41
Linnet	<i>Carduelis cannabina</i>	S.41; Red
Little Egret	<i>Egretta garzetta</i>	Amber
Long-Winged Conehead	<i>Conocephalus discolor</i>	Na
Marbled Green	<i>Cryphia muralis</i>	Nb
Marbled Pug	<i>Eupithecia irriguata</i>	Nb
Marsh Fritillary	<i>Eurodryas aurinia</i>	S.41; DBAP; Nb
Marsh Oblique-Barred	<i>Hypenodes humidialis</i>	Nb
Marsh Tit	<i>Parus palustris</i>	Red
Marsh Warbler	<i>Acrocephalus palustris</i>	S.41; Red
Meadow Brome	<i>Bromus commutatus</i>	DN2
Mistle Thrush	<i>Turdus viscivorus</i>	Amber
Mottled Rustic	<i>Caradrina morpheus</i>	S.41
Mouse Moth	<i>Amphipyra tragopoginis</i>	S.41
Mullein Wave	<i>Scopula marginepunctata</i>	S.41
Narrow headed ant	<i>Formica exsecta</i>	S.41
Narrow-bordered hawk-moth	<i>Hemaris tityus</i>	S.41; Na
Newt	<i>Triturus</i>	WCA
Nightjar	<i>Caprimulgus europæus</i>	S.41; DBAP; Red
Nit-Grass	<i>Gastridium ventricosum</i>	NS; DN1; DR
Noctule	<i>Nyctalus noctula</i>	S.41
Nuttall's Water-weed	<i>Elodea nuttallii</i>	DN1
Oblique Carpet	<i>Orthonama vittata</i>	S.41
Orange Footman	<i>Eilema sororcula</i>	Nb
Otter	<i>Lutra lutra</i>	S.41; DBAP
Pale Eggar	<i>Trichiura crataegi</i>	S.41
Pale Heath Violet	<i>Viola lactea</i>	S.41; NS; DN2
Pale St. John's-Wort	<i>Hypericum montanum</i>	DN3
Palmate Newt	<i>Triturus helveticus</i>	WCA
Pearl Bordered fritillary	<i>Boloria euphrosyne</i>	S.41; DBAP; Nb
Pearl-bordered Fritillary	<i>Boloria euphrosyne</i>	S.41; DBAP; Nb
Peregrine	<i>Falco peregrinus</i>	Amber
Petty Whin	<i>Genista anglica</i>	DN3
Pipistrelle	<i>Pipistrellus pipistrellus</i>	WCA
Pretty Chalk Carpet	<i>Melanthia procellata</i>	S.41

Common name	Scientific name	Status
Prickly Lettuce	<i>Lactuca serriola</i>	DN2
Primrose	<i>Primula vulgaris</i>	DBAP
Purple Hairstreak	<i>Quercusia quercus</i>	Decline
Pygmy Shrew	<i>Sorex minutus</i>	WCA
Pyramidal Orchid	<i>Anacamptis pyramidalis</i>	DN2
Red-Eyed Damselfly	<i>Erythromma najas</i>	KeyD (R)
Redwing	<i>Turdus iliacus</i>	Amber
Reed Bunting	<i>Emberiza schoeniclus</i>	S.41; Red
Roe Deer	<i>Capreolus capreolus</i>	WCA
Rosy Minor	<i>Mesoligia literosa</i>	S.41
Rosy Rustic	<i>Hydraecia micacea</i>	S.41
Ruddy Carpet	<i>Catarhoe rubidata</i>	Nb
Ruddy Darter	<i>Sympetrum sanguineum</i>	Nb; KeyD (R)
Rustic	<i>Hoplodrina blanda</i>	S.41
Sallow	<i>Xanthia icteritia</i>	S.41
Scarce Chaser	<i>Ischnura pumilio</i>	Nb; KeyD (N)
Sea Aster	<i>Aster tripolium</i>	DN3
Shaded Broad-Bar	<i>Scotopteryx chenopodiata</i>	S.41
Sheperd's needle	<i>Scandix pecten-veneris</i>	S.41; NS; DN1; DR
Shining Pondweed	<i>Potamogeton lucens</i>	DN1; DR
Shoulder-Striped Wainscot	<i>Mythimna comma</i>	S.41
Silky Wainscot	<i>Chilodes maritimus</i>	Nb
Silver-studded Blue	<i>Plebejus argus</i>	S.41; Nb
Skylark	<i>Alauda arvensis</i>	S.41; Red
Slender Bedstraw	<i>Galium pumilum</i>	NS
Slender Marsh-Bedstraw	<i>Galium constrictum</i>	NR; DN1; DR
Slow-Worm	<i>Anguis fragilis</i>	S.41
Small Grass Emerald	<i>Chlorissa viridata</i>	Na
Small Heath	<i>Coenonympha pamphilus</i>	S.41
Small Pearl-bordered Fritillary	<i>Boloria selene</i>	S.41; Decline
Small Phoenix	<i>Ecliptopera silaceata</i>	S.41
Small Red Damselfly	<i>Ceriagrion tenellum</i>	Nb; KeyD (N)
Small Square-Spot	<i>Diarsia rubi</i>	S.41
Smooth Brome	<i>Bromus racemosus</i>	DN2
Smooth Newt	<i>Triturus vulgaris</i>	WCA
Snipe	<i>Gallinago gallinago</i>	Amber
Snowdrop	<i>Galanthus nivalis</i>	CITES 11
Song Thrush	<i>Turdus philomelos</i>	S.41; Red
Spotted Flycatcher	<i>Muscicapa striata</i>	S.41; Red
Spurge-Laurel	<i>Daphne laureola</i>	DN2
Stag Beetle	<i>Lucanus cervus</i>	S.41; Na
Starling	<i>Sturnus vulgaris</i>	Red
Stock Dove	<i>Columba oenas</i>	Amber
Stonechat	<i>Saxicola torquata</i>	Amber
Swallow	<i>Hirundo rustica</i>	Amber
Three-lobed water-crowfoot	<i>Ranunculus tripartitus</i>	S.41; DN1; vul
Tree Pipit	<i>Anthus trivialis</i>	S.41; Amber
Upright Brome	<i>Bromopsis erecta</i>	DN1
Viviparous Lizard	<i>Lacerta vivipara</i>	S.41
Wall Brown	<i>Lasiommata megera</i>	S.41
Water Chickweed	<i>Myosoton aquaticum</i>	DN3

Common name	Scientific name	Status
Water Rail	Rallus aquaticus	Amber
Water Shrew	Neomys fodiens	WCA
Whiskered Bat	Myotis mystacinus	WCA
White Admiral	Ladoga camilla	Decline
White Ermine	Spilosoma lubricipeda	S.41
White-Legged Damselfly	Platycnemis pennipes	Nb; KeyD (N)
White-letter Hairstreak	Satyrrium w-album	S.41; Nb; Decline
White-line snout	Schrankia taenialis	Nb
Willow Warbler	Phylloscopus trochilus	Amber
Wood Warbler	Phylloscopus sibilatrix	S.41; Amber
Wood White	Leptidea sinapis	S.41; Nb
Woodcock	Scolopax rusticola	Amber
Woodlark	Lullula arborea	S.41; Red
Yellow Bartsia	Parentucellia viscosa	DN2
Yellowhammer	Emberiza citrinella	S.41; Red

<b>WCA</b>	<b>Wildlife and Countryside Act (1981)</b>
<b>S.41</b>	<b>Species or habitat of principal importance in England (i.e. English BAP priority species / habitat)</b> – see Section 41 of the Natural Environment and Rural Communities Act (2006).
<b>DBAP</b>	<b>Devon Biodiversity Action Plan species:</b> these have been identified as species of key conservation concern in Devon.
<b>NS</b>	<b>Nationally Scarce:</b> 15-100 10km squares in Atlas of British Flora 1962.
	<b>Devon Notable Species:</b> species recorded from 2km squares in the Atlas of Devon Flora 1984 (R.B. Ivimey-Cook, Department of Biological Sciences, The University of Exeter).
<b>DN1</b>	<b>Devon Notable<sup>1</sup>:</b> 1-25 2 km squares in Atlas of Devon Flora 1984.
<b>DN2</b>	<b>Devon Notable<sup>2</sup>:</b> 26-50 2 km squares in Atlas of Devon Flora 1984.
<b>DN3</b>	<b>Devon Notable<sup>3</sup>:</b> Selected species recorded from over 50 2 km squares in Atlas of Devon Flora 1984.
<b>DR</b>	<b>Devon Rarity:</b> native species recorded from 3 or fewer localities within Devon.
<b>Na</b>	<b>Nationally Notable A:</b> known from 30 or fewer 10km squares. Taken from the Invertebrate Site Register.
<b>Nb</b>	<b>Nationally Notable B:</b> known from 100 or fewer 10km squares. Taken from the Invertebrate Site Register.
<b>Decline</b>	Substantial local decline in Devon
<b>Red List</b>	Bird species of high conservation concern, such as those whose population or range is rapidly declining, recently or historically, and those of global conservation concern.
<b>Amber List</b>	Bird species of medium conservation concern, such as those whose population is in moderate decline, rare breeders, internationally important and localised species and those of unfavourable conservation status in Europe.
<b>KeyD (N)</b>	<b>Nationally Important Key Dragonfly Species:</b> those which have been recorded in less than 10% of 10km squares in Britain. Those occurring in Devon are White-legged damselfly ( <i>Platycnemis pennipes</i> ) Scarce blue-tailed damselfly ( <i>Ischnura pumilio</i> ) Small red damselfly ( <i>Ceragrion tenellum</i> ) Hairy dragonfly ( <i>Brachytron pratense</i> ) Downy emerald ( <i>Cordulia aenea</i> ) and Keeled skimmer ( <i>Orthoetrum coerulescens</i> ).
<b>KeyD (R)</b>	<b>Regionally Important Key Dragonfly Species:</b> those which have been recorded in 10-20% of the 10km squares in Britain: Red-eyed damselfly ( <i>Erythronma najas</i> ) and Ruddy darter ( <i>Sympetrum sanguineum</i> ).
<b>CITES</b>	<b>Convention on International Trade in Endangered Species (CITES)</b>

**RDB2**

**Red Data Book 2: Vulnerable.** Taxa believed likely to move into the endangered category in the near future if casual factors continue to operate. Includes taxa which are still abundant but are under threat from serious adverse factors throughout their range.

**VULNERABLE (VUL)**

A taxon is Vulnerable when the best available evidence indicates that it meets any of the criteria A to E for Vulnerable (see [Red List Categories and Criteria booklet](#) for details), and it is therefore considered to be facing a **high risk of extinction** in the wild.

Draft