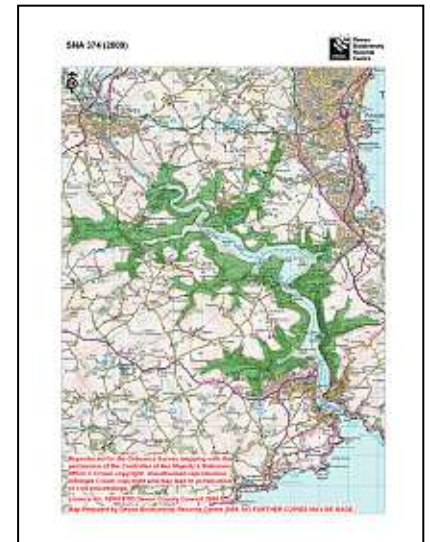


## 1. SNA details

<b>SNA name:</b>	Dart Estuary Hinterland
<b>SNA unique number:</b>	374
<b>SNA area (ha):</b>	1,991.92



## 2. Summary of nature conservation interest

### Priority BAP habitats:

<b>Main Regional Nature Map habitat:</b>	Woodland
<b>Other Regional Nature Map habitat(s):</b>	
<b>Other UK BAP habitats:</b>	Lowland Mixed Deciduous Woodland, Lowland Meadow, Undetermined Woodland, Reedbed, Lowland Meadow, Lowland Beech & Yew Woodland, Coastal Saltmarsh, Ponds, Hedges, Rivers.

This SNA includes the land around the Dart Estuary and is an impressive scenic area lying within the South Devon Area of Outstanding Natural beauty. It includes farmland, woodland and a few small settlements. Semi-natural woodland, much of which is on the ancient woodland inventory occurs on some of the steeper valley sides down to the waters edge and in the wooded coombes that run down to the River. Reedbeds, saltmarsh and ponds occur on some of the inlets. There are also some areas of lowland meadow.

<b>Important species or species assemblage</b>	<b>Status</b>
Oak-ash-hazel woodland in Lord's Wood SSSI	
Plants of local or restricted distribution e.g. pale sedge, narrow buckler fern.	Devon Notable plant species
Plants associated with ancient woodland e.g. Sanicle, Golden Rod, Wood Violet.	
Mosses and lichens on mature trees.	
Devon notable plant species associated with brackish habitats e.g. Sea Purslane, Common Seablite.	Devon Notable plant species
Invertebrates associated with reedbeds e.g. Dragonflies & damselflies.	
Farmland birds e.g. Cirl Bunting, Yellowhammer, Barn Owl.	S.41 (Cirl Bunting, Yellowhammer) DBAP (Cirl Bunting, Barn Owl) Red (Cirl Bunting & Yellowhammer) Amber (Barn Owl)
Woodland birds e.g. Green Woodpecker, cuckoo, bullfinch.	S.41 (Cuckoo, Bullfinch) Red (Bullfinch) Amber (Green Woodpecker, Cuckoo)
Bats e.g. Lesser & Greater Horseshoe, 55hz pipistrelle.	S.41 (all) DBAP (Greater Horseshoe)
Dormouse	S.41, DBAP
Otter	S.41, DBAP

See Appendix 1 for a full list of species recorded in this SNA.

The SNA is of geological importance for its lithological and structural features associated with Torquay limestone.

## Nature conservation designations

Please refer to a site's formal citation for a complete consideration of the reasons for its designation.

Designation	Site Name	Description
SSSI	Lord's Wood	Ancient semi-natural woodland

This SNA lies within the South Devon Area of Outstanding Natural Beauty.

In addition the SNA includes 17 County Wildlife Sites covering habitats including: Unimproved neutral grassland, reedbed, marshy grassland, saltmarsh, ancient semi-natural woodland, secondary broadleaved woodland.

There are 3 Regionally Important Geological Sites.

## 3. UK BAP Priority habitat maintenance and restoration targets for SNA no 374

(the measurement unit is hectare unless stated otherwise and rounded up/down)

**Maintenance targets** (current extent of habitat) – 100 % favourable condition (based on NBN habitat layers)

UK BAP priority habitat	Undetermined Woodland	Lowland mixed deciduous woodland	Lowland beech & yew woodland	Woodland TOTAL	Reedbeds	Lowland Meadow	Coastal Saltmarsh	TOTAL
Minimum area *		22		22				22
Maximum area #	6	286	64 **	356	3	12	2	373

\* current extent of habitat = a + b

a) sum of all the areas of criterion 1 polygons

b) number of criterion 2 polygons multiplied by the minimum mappable unit for that habitat

[criterion 3 polygons not included]

# current extent of habitat = criterion 1 + criterion 2 + criterion 3

\*\* The accuracy of this habitat data is questionable as this habitat type is not usually found in Devon. These areas of woodland are more likely to be lowland mixed deciduous woodland.

## **Theoretical restoration/creation targets using Rebuilding Biodiversity (RB) methodology:**

The Rebuilding Biodiversity in the South West Technical Manual, November 2005 suggests the following restoration/creation targets for a Strategic Nature Area profile where the priority habitat is semi-natural broadleaved woodland:

- 30% cover of priority habitat
- 30% cover of other semi-natural habitat
- 40% cover of other land uses.

*This SNA profile will be further developed as follows:*

### **4. Opportunities for habitat restoration and creation in the SNA**

This is an optional but desirable section to be completed by local experts and which would outline the practical opportunities for habitat restoration and creation on the ground. This may include emphasising the importance of an SNA for habitats additional to the primary one for which it was identified or, indeed, for particular species.

This section can also be used to develop more realistic habitat restoration targets, which could then be used to refine the theoretical targets listed above.

### **5. Constraints to habitat restoration and creation in the SNA**

As above, but in this case outlining the constraints to habitat restoration and creation in the SNA.

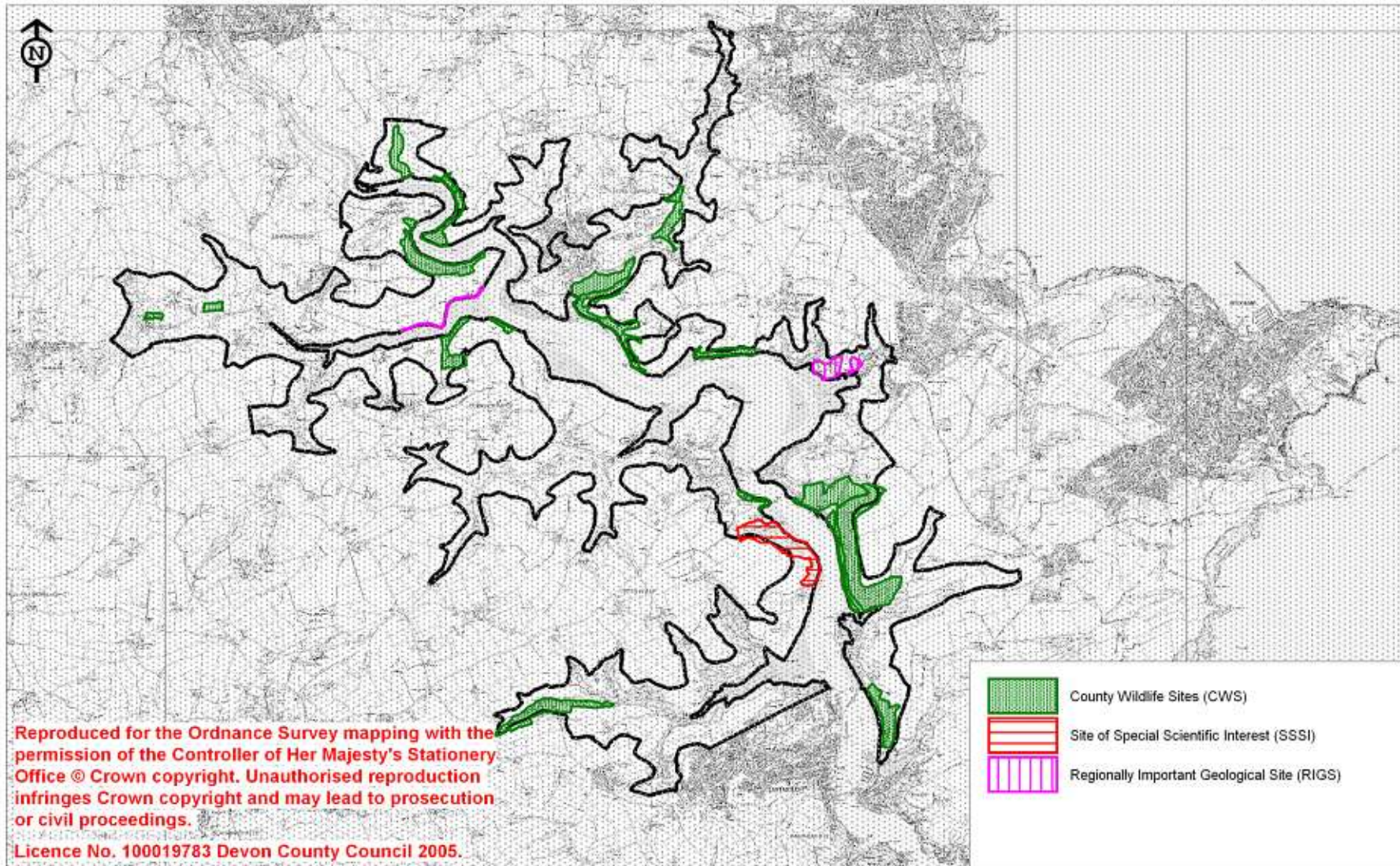
### **6. Other information**

This is another optional section reliant upon local knowledge of the SNA. This section can be used for any other information that might be useful. It may be particularly useful for those SNAs within which there current projects or for which projects are planned.

Contents could include:

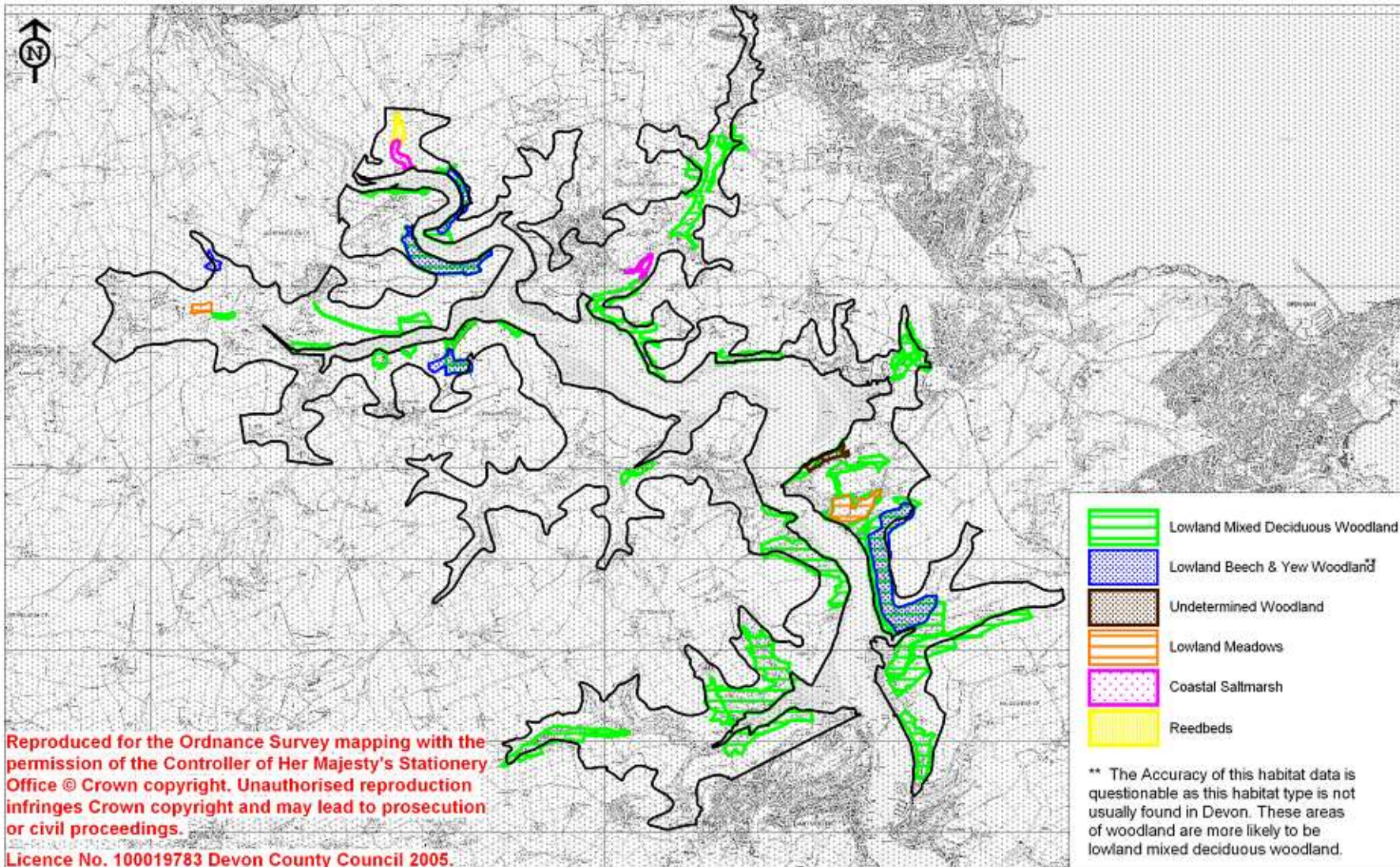
- Restoration targets for BAP habitats additional to the main nature map habitat.
- Maps detailing areas for restoration
- Nature conservation objectives
- And so on.

## Designated sites within SNA 374, Dart Estuary (2009)



Map Prepared by Devon Biodiversity Records Centre 2009. NO FURTHER COPIES MAY BE MADE.

## Selected UKBAP priority habitats within SNA 374 (2009)



## Appendix 1: Legally protected & notable species recorded in SNA no 374

Common name	Scientific name	Status
Greater Horseshoe Bat	<i>Rhinolophus ferrumequinum</i>	S.41; DBAP
Grey Wagtail	<i>Motacilla cinerea</i>	Amber
Wall Brown	<i>Lasiommata megera</i>	S.41
Swallow	<i>Hirundo rustica</i>	Amber
Barn Owl	<i>Tyto alba</i>	DBAP; Amber
Pipistrelle	<i>Pipistrellus pipistrellus</i>	WCA
Brown Long-Eared Bat	<i>Plecotus auritus</i>	S.41
Whiskered Bat	<i>Myotis mystacinus</i>	WCA
Ramping Fumitory	<i>Fumaria capreolata</i>	DN3
Primrose	<i>Primula vulgaris</i>	DBAP
Badger	<i>Meles meles</i>	WCA
Shelduck	<i>Tadorna tadorna</i>	Amber
Willow Warbler	<i>Phylloscopus trochilus</i>	Amber
Lesser Water-Parsnip	<i>Berula erecta</i>	DN2
Otter	<i>Lutra lutra</i>	S.41; DBAP
Common Shrew	<i>Sorex araneus</i>	WCA
Stoat	<i>Mustela erminea</i>	WCA
Butcher's-Broom	<i>Ruscus aculeatus</i>	WCA
Common Dormouse	<i>Muscardinus avellanarius</i>	S.41; DBAP
Allis Shad	<i>Alosa alosa</i>	S.41
Lesser Horseshoe Bat	<i>Rhinolophus hipposideros</i>	S.41
Goldcrest	<i>Regulus regulus</i>	Amber
Little Egret	<i>Egretta garzetta</i>	Amber
Great Green Bush Cricket	<i>Tettigonia viridissima</i>	DBAP
Mole Cricket	<i>Gryllotalpa gryllotalpa</i>	S.41
Sea Aster	<i>Aster tripolium</i>	DN3
Greater Sea-Spurrey	<i>Spergularia media</i>	DN2
Mute Swan	<i>Cygnus olor</i>	Amber
Bullfinch	<i>Pyrrhula pyrrhula</i>	S.41; Red
Mistle Thrush	<i>Turdus viscivorus</i>	Amber
Cuckoo	<i>Cuculus canorus</i>	S.41; Amber
Marsh Tit	<i>Parus palustris</i>	Red
Yellowhammer	<i>Emberiza citrinella</i>	S.41; Red
Green Woodpecker	<i>Picus viridis</i>	Amber
Cirl Bunting	<i>Emberiza cirlus</i>	S.41; DBAP; Red
Lesser Sea-Spurrey	<i>Spergularia marina</i>	DN3
Sea Meadow-Grass	<i>Puccinellia maritima</i>	DN2
Sea Purslane	<i>Atriplex portulacoides</i>	DN2
Common Seablite	<i>Suaeda maritima</i>	DN2
Kingfisher	<i>Alcedo atthis</i>	Amber
Little-Robin	<i>Geranium purpureum</i>	NR; DN1
Natterer's Bat	<i>Myotis nattereri</i>	WCA
Round-Leaved Fluellen	<i>Kickxia spuria</i>	DN2
Small-Flowered Buttercup	<i>Ranunculus parviflorus</i>	DN3
Common Broomrape	<i>Orobanche minor</i>	DN2
55 Khz Pipistrelle	<i>Pipistrellus pipistrellus 55kHz</i>	S.41
45 Khz Pipistrelle	<i>Pipistrellus pipistrellus 45kHz</i>	WCA
Wild Cabbage	<i>Brassica oleracea</i>	NS
Jersey Tiger	<i>Euplagia quadripunctaria</i>	Nb
Round-Leaved Crane's-Bill	<i>Geranium rotundifolium</i>	DN3
Purple Hairstreak	<i>Quercusia quercus</i>	Decline
Lesser Centaury	<i>Centaurium pulchellum</i>	DN1

<b>WCA</b>	<b>Wildlife and Countryside Act (1981)</b>
<b>S.41</b>	<b>Species or habitat of principal importance in England (i.e. English BAP priority species / habitat)</b> – see Section 41 of the Natural Environment and Rural Communities Act (2006).
<b>DBAP</b>	<b>Devon Biodiversity Action Plan species:</b> these have been identified as species of key conservation concern in Devon.
<b>NR</b>	<b>Nationally Rare:</b> 1-15 10km squares in Atlas of British Flora 1962.
<b>NS</b>	<b>Nationally Scarce:</b> 15-100 10km squares in Atlas of British Flora 1962.
	<b>Devon Notable Species:</b> species recorded from 2km squares in the Atlas of Devon Flora 1984 (R.B. Ivimey-Cook, Department of Biological Sciences, The University of Exeter).
<b>DN1</b>	<b>Devon Notable<sup>1</sup>:</b> 1-25 2 km squares in Atlas of Devon Flora 1984.
<b>DN2</b>	<b>Devon Notable<sup>2</sup>:</b> 26-50 2 km squares in Atlas of Devon Flora 1984.
<b>DN3</b>	<b>Devon Notable<sup>3</sup>:</b> Selected species recorded from over 50 2 km squares in Atlas of Devon Flora 1984.
<b>Nb</b>	<b>Nationally Notable B:</b> known from 100 or fewer 10km squares. Taken from the Invertebrate Site Register.
<b>Decline</b>	Substantial local decline in Devon
<b>Red List</b>	Bird species of high conservation concern, such as those whose population or range is rapidly declining, recently or historically, and those of global conservation concern.
<b>Amber List</b>	Bird species of medium conservation concern, such as those whose population is in moderate decline, rare breeders, internationally important and localised species and those of unfavourable conservation status in Europe.